

Investor Relations (IR) Web Data Services

Brochure 2010

A ProfileData™ Service

ProfileData offers a comprehensive range of **web-based investor relations data services** designed to enhance listed company websites. ProfileData's research department monitors listed company activity on a real-time basis. This enables us to be pro-active rather than reactive. Although built on proven designs and delivery methods, ProfileData's IT team can customise the IR data services to meet each client's technical and design requirements.

1. Standard end-of-day price page with stats

- Price averages and periodic growth/changes
- Volume averages
- Historical P/E, DY and EY
- Historical price chart (eg, 1 year, 3 years, 5 years)

Someone's listening to you
HOME | SITE MAP | DISCLAIMER | CONTACTS | LEGAL

ABOUT VOX TELECOM | INVESTOR CENTRE | PRESS | REPORTS | MARKET INDICATOR

> Someone's listening to you

ABOUT VOX TELECOM

- group at a glance
- directors
- message from ceo
- message from chairman
- corporate governance
- sustainability
- time line
- social responsibility

INVESTOR CENTRE

- listing information
- presentations
- sens
- sens archive
- bee
- glossary of terms

PRESS

- media
- media archive
- interviews

REPORTS

- annual reports
- interim results
- circulars

MARKET INDICATORS

- end of day prices
- historical statistics
- alert services
- smart chart
- interactive performance

CAREERS

Integrated Telecommunications

Historical Price Statistics

6 months 1 yr

[Click here for full interactive graph](#)

Last close (Tue 17 Mar):	53c	Last week (Tue 10 Mar):	53c
Previous close (Mon 16 Mar):	53c	Week's move:	0c (0%)
Day's move:	0c (0%)	Week's low:	53c
Day's low:	53c	Week's high:	55c
Day's high:	55c	Week's volume:	47 967
Day's volume:	47 967	Average volume per week:	R26k
Day's value:	R26k	One month ago (18 Feb):	53c
Average volume per day:	1 131 184	One month move:	0c (0%)
Average value per day:	R1 750k	52 weeks ago (18 Mar):	53c
P/E ratio:	13.12	52 week move:	0c (0%)
Earnings yield (EY):	7.62%	52 week low:	53c
Dividend yield (DY):	0.0%	52 week high:	55c
Ords in issue:	1 165m	52 week volume:	47 967
Market cap:	R617m	52 week value:	R26k
Liquidity (52 weeks):	25.06		

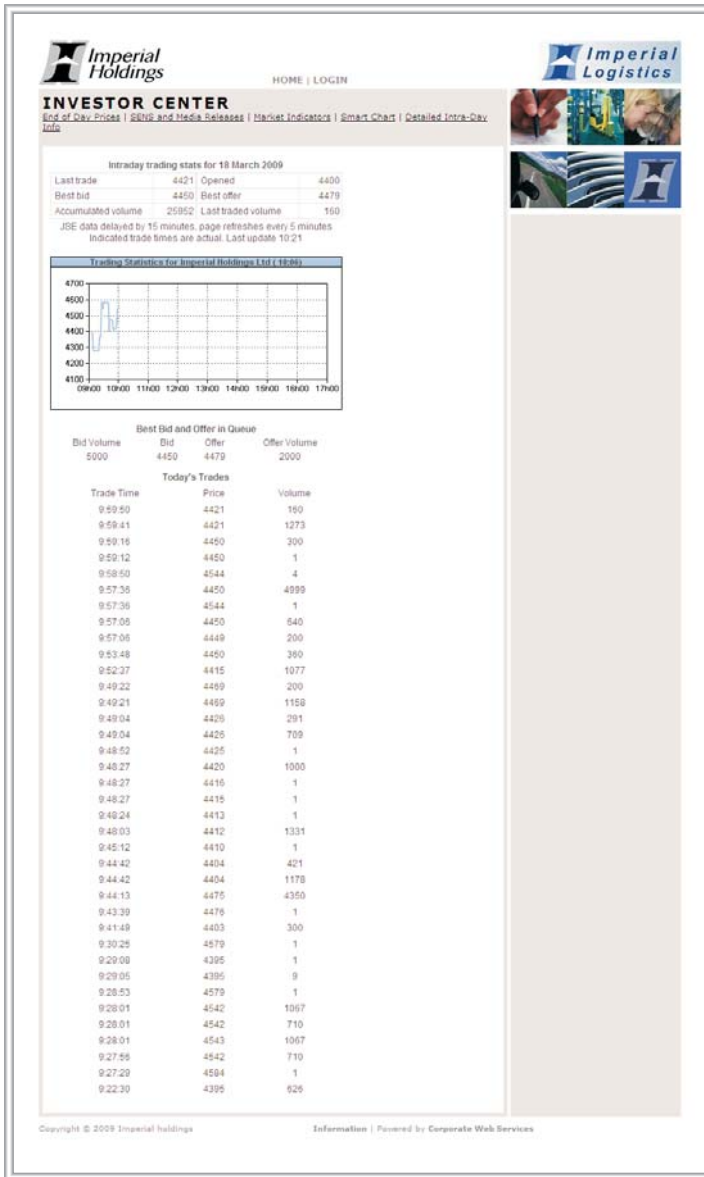
Powered by ProfileData

Closing price data source: JSE Ltd. All other statistics calculated by ProfileData.

Advanced end-of-day price (with stats on graph)



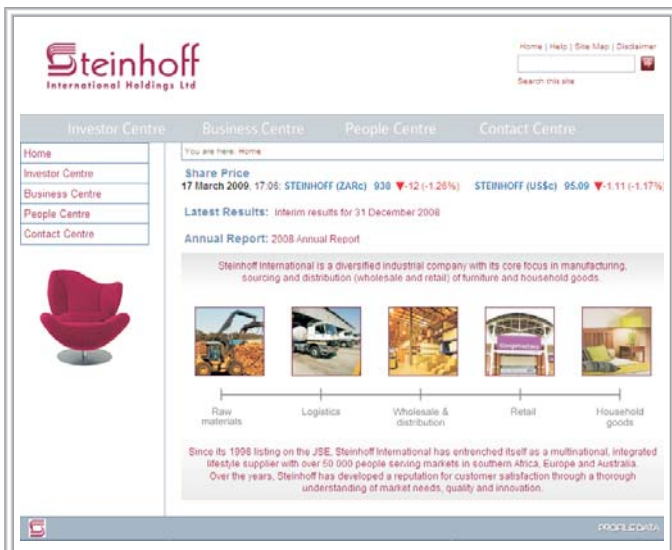
2. Intra-day price, trading stats and graph



- 15 minute delay (as per JSE Limited rules)
- Best bid and offer
- Last ten trades
- Intra-day chart
- Refreshed every five minutes

3. Scrolling ticker

- Long and short options available
- Best bid and offer
- Value and percentage change



4. News Summary service

REUNERT
REUNERT LIMITED

Register for investor updates | Site map | Search | Enter keyword

Home | About | Investor centre | Financials | Group overview | Sustainability | News and media | Contacts

News and media
Media releases
SENS releases
Media archives
Presentations
Company logos
Register for news

SENS releases

04 February 2009
Reunert - report on AGM
At the 95th (ninety fifth) annual general meeting of the shareholders of Reunert held today, 04 February 2009, all the ordinary and special resolutions proposed at...

04 February 2009
Reunert - lower earnings
Reunert has entered its 2nd quarter and all indications are that its half year results for the period ending 31 March 2009 will be down. Shareholders...

09 January 2009
Reunert - declaration of dividend 47
A preference dividend at the rate of 5.5% per annum has been declared for the half year ended 31 December 2008, payable in South African currency...

12 December 2008
Reunert - no change statement & AGM
Annual financial statements have been distributed to shareholders on or about 12 December 2008 and contain no modifications to the reviewed results which were published on...

25 November 2008
Reunert final results September 08

[Back to top](#)

- News summaries with archive links
- Results summaries
- Financial media comment with hyperlinks (where available)
- Press release service

5. Director dealings (SENS)

CONTROL INSTRUMENTS
GROUP LIMITED

SEARCH →

Home | Company overview | Results | Investors | News | Values | Contact Us

Director Dealings

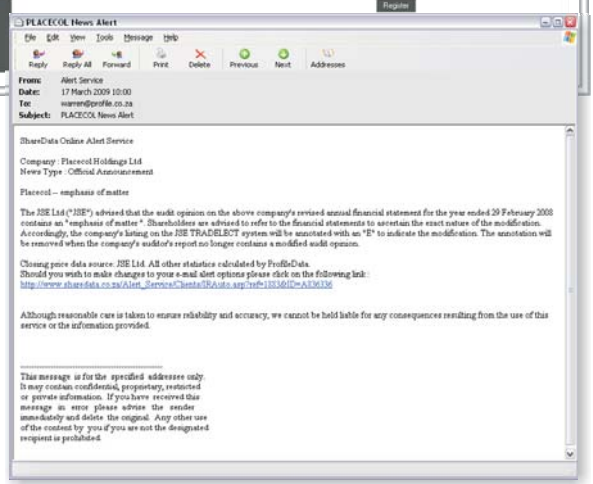
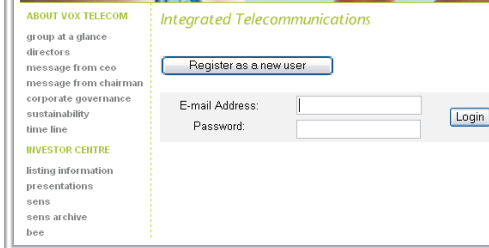
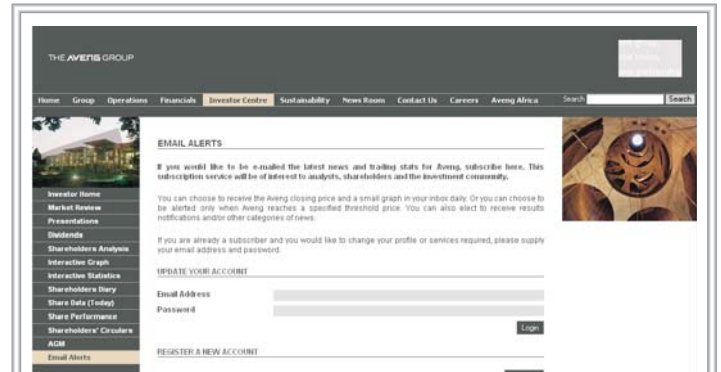
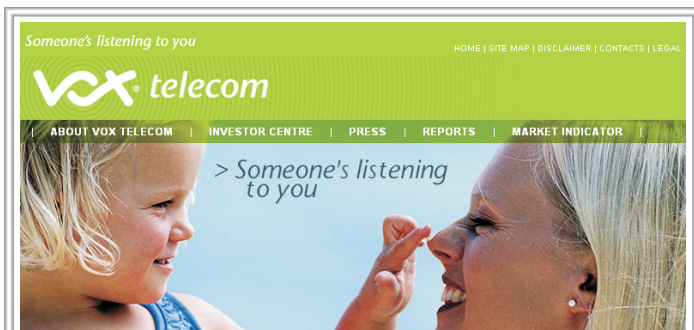
Date	Name	Buy/Sell	Volume	Price	Type
11 Sep 2008	Bromfield, Stuart	Buy	475000	135	Directly Beneficial
11 Sep 2008	Friedman, Richard	Buy	1025000	135	Directly Beneficial
27 Jun 2008	Friedman, Richard	Buy	642500	135	Directly Beneficial
11 Jun 2008	Other	Buy	1000	120	Directly Beneficial
5 Jun 2008	Fraenkel, Rob J	Buy	75228	127	Indirectly Beneficial
5 Jun 2008	Friedman, Richard	Buy	250000	128	Directly Beneficial
4 Jun 2008	Friedman, Richard	Buy	106500	117	Directly Beneficial
22 May 2008	Other	Buy	40000	121	Directly Beneficial
20 Mar 2008	Fraenkel, Rob J	Buy	80000	130	Directly Beneficial
20 Mar 2008	Fraenkel, Rob J	Buy	9100	134	Directly Beneficial
25 Mar 2008	Fraenkel, Rob J	Buy	231000	149	Directly Beneficial
19 Mar 2008	Fraenkel, Rob J	Buy	516000	150	Directly Beneficial
19 Mar 2008	Friedman, Richard	Buy	1000000	150	Directly Beneficial
17 Mar 2008	Fraenkel, Rob J	Buy	1076500	145	Directly Beneficial

[Site map](#) | [Glossary](#) | [Access to Information](#) | [Disclaimer](#)
Copyright © 1998-2008 Control Instruments CI Group

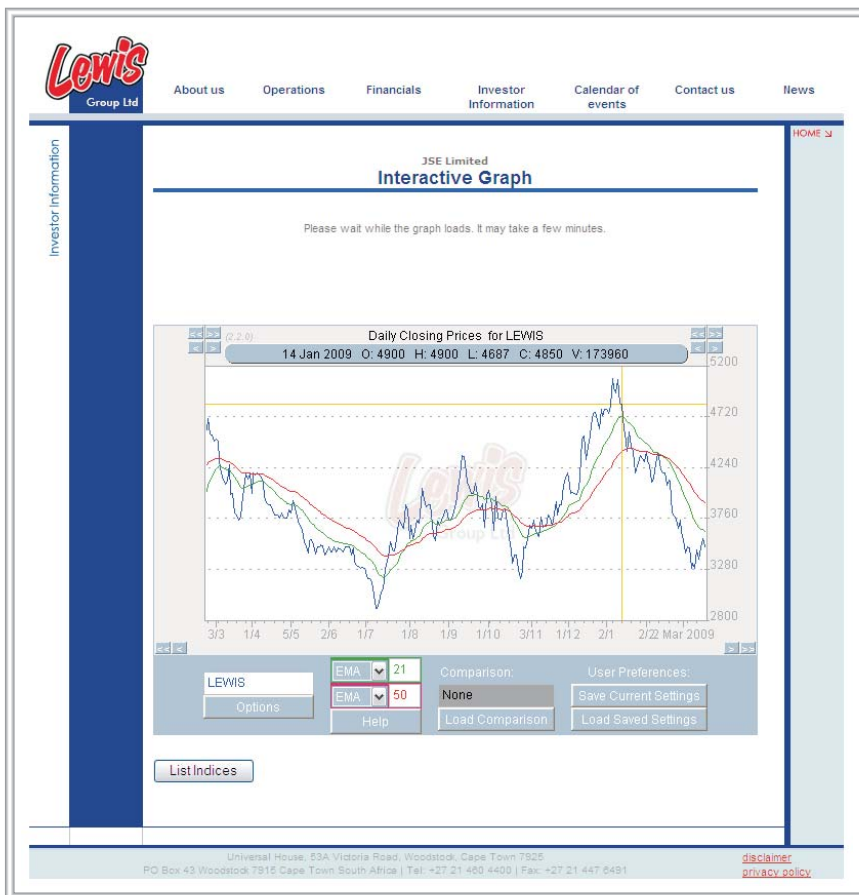
- Separate SENS feed
- Optional table format

6. Email Alert Services

- User registration
- Daily closing prices by email
- Threshold alerts (price level or percentage move)
- News summary service by email
- Other corporate actions (dividends, etc)



7. SmartChart™ Interactive Charting



- Variable periods, panning, zoom, trendlines
- Comprehensive set of benchmarks and comparatives

8. Market Performance page

MVELAPHANDA GROUP LIMITED

Register for alerts | Sitemap | Bookmark us | Search

Home | Investor centre | Contact us

Investor centre

JSE, 10:31 **MVG** last traded at 355 ▲ (0.00%)
Prices 15 minutes delayed

Current financials **Share price information**

Company profile [Valuation](#) [Interactive chart](#) [Market performance](#) [End-of-day chart](#)

Group structure

Board and management Use this tool either by selecting a period from the quick select options on the left or by entering user-defined dates.

Financial results

Share price information **Quick select** **User-defined**

News, media and sens

Presentations

Events calendar

Key documents

Investor Info Request

IR contact

F.A.Q.

Enter recipient's e-mail:

	30 Jun 2008 to 31 Dec 2008	31 Dec 2007 to 30 Jun 2008
Market value per share (ZARc)		
- at period-end	495	600
- highest	675	1146
- lowest	430	570
- volume weighted average price	575	822
Earnings yield (%)	-73.25	3.77
Dividend yield (%)	4.24	3.67
Average EY for period (%)	-45.50	14.26
Average P/E ratio for period	8.07	24.30
Market capitalisation at closing prices (Rm)	2,813	2,440
Price earnings ratio at period end	-2.00	-2.00
Value of shares traded (Rm)	213.0	1,851.0
Number of shares traded (million)	37.0	191.0
Average price per share traded (ZARc)	554	801
Percentage of market capitalisation traded (%)	10.6	22.0
Liquidity (%)	7.0	6.0
Weekly rand (Rm) value traded	8.00	22.00

All rights reserved. Mvelaphanda Group Limited 2008
Hosted and Maintained by **PROFILE DATA**

- Summary of key market information covering the last financial year or user selected periods
- Data includes market cap at period end, volume weighted average share price, value and volume traded for the period, average P/E for period, and much more
- Defaults to last financial year and accepts user-defined dates.

9. Market indicators

Imperial Holdings

HOME | LOGIN

imperial
Europcar

Minister opens R3mil admin block for poor school
[Read more...](#)

Rand/Euro 12.86 ▼-0.05 (-0.38%) Gold \$/oz 910.7 ▼-13.4 (-1.45%) Brent Crude 46.3 ▲0.26 (0.56%)

MOVE...

Imperial is a diversified multinational industrial services and retail group, with activities spanning logistics, car rental and vehicle retailing. While capitalising on the synergies between our business entities, our decentralised management structure actively encourages entrepreneurship, innovation and industry-specific best practices

The group operates through five divisions: Logistics in Southern Africa and Europe, Car rental and Tourism, Vehicle Distributorships, Vehicle Dealerships and Insurance. The activities of group associates include financial services through Imperial Bank. Imperial is active in South Africa, selected parts of Africa, Europe, Scandinavia and Australia.

Search Group Directory:
Select a division...
Type part of a name...

PROFILE
INVESTOR RELATIONS
CREDIT RATINGS
FINANCIAL REPORTS
HUMAN CAPITAL
NEWS ARCHIVE
CONTACT US

Copyright © 2009 Imperial holdings Information | Powered by Corporate Web Services

A wide range of EoD and intra-day data is available, such as:

- R153
- DJIA
- Nasdaq
- Gold price (USD)
- ZAR/USD
- ZAR/EUR
- ZAR/GBP

12 Home page exposure

- Price graphs
- Ticker and selected stats
- News summary service
- Media comment
- Director dealings

13 Share price calculator

- Calculate current and historical value of shares



For more information please contact:

Cynthia Price: cynthia@profile.co.za

Lisa Trollope: lisa@profile.co.za

PO Box 87254, Houghton 2041, South Africa

Tel: +27-11-728-5510

| Fax: +27-11-728-6031

| Email: info@profile.co.za

| Website: www.profile.co.za